



Job Aid: Clocking In/Out



Main Menu Function Keys

Button	Description
Clock In	Press this button to clock in for the day
Start Lunch	Press this button when leaving for lunch <i>Used only by those agencies who clock in/out for lunch.</i>
End Lunch	Press this button when returning from lunch <i>Used only by those agencies who clock in/out for lunch.</i>
Clock Out	Press this button to clock out for the day
Enroll	Opens the biometric enrollment menu (for users with enroller access or higher)
Settings	Opens settings menu (for users with Admin access)

- If a punch is *successful*, a high pitched tone will sound and the transaction is posted to your timesheet. A message will also appear on the clock confirming the punch was successful.
- An *unsuccessful* punch is signified by a low pitched tone. A message will also appear on the clock notifying the punch was not successful.

Clock Main Menu





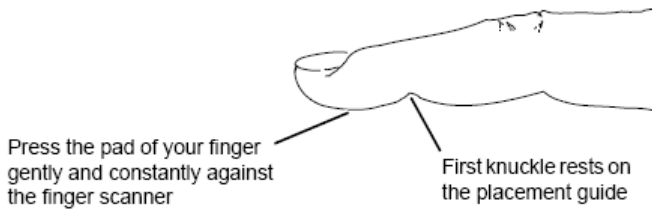
Properly Placing your Finger on Sensor

Proper use of a biometric reader, or finger scanner, helps ensure consistent and accurate finger scans. To use the finger scanner, lock, drop, and hold the pad of your fingertip on the scanner:

Note: For finger scans, we recommend you use an index finger, middle finger, or a ring finger, in that order. We recommend you do not use a thumb.

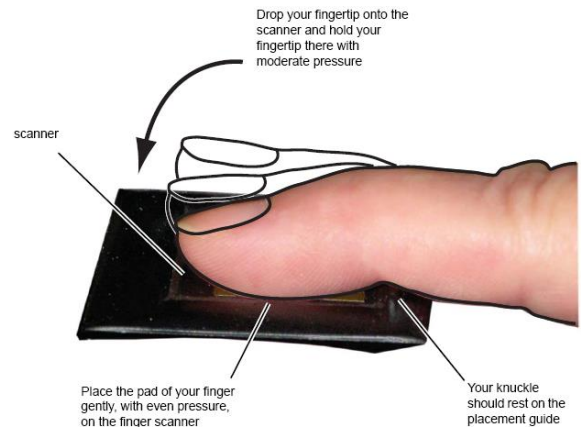
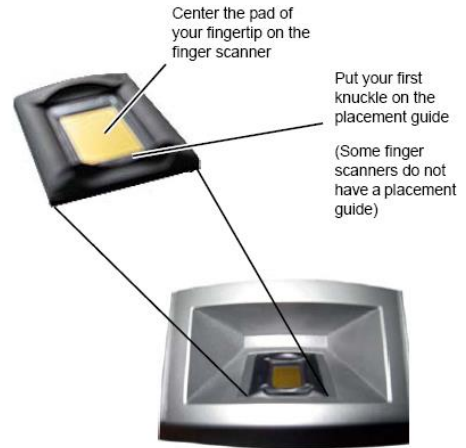
1. **Lock:** With the palm of your hand facing towards the finger scanner, place the first knuckle of your finger on the ridge that is the finger scanner placement guide. Center your finger on the placement guide.

Caution: Don't slide your finger onto the finger scanner, as this can push debris onto the finger scanner.

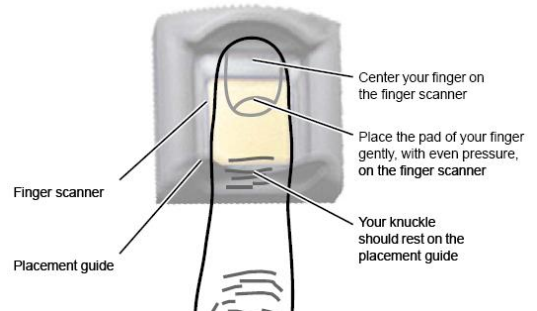


Knuckle placement for finger scanner

2. **Drop:** Gently, lower your fingertip onto the finger scanner.
3. **Hold:** Push the pad of your fingertip against the finger scanner with a light, constant pressure. You do not need to push your finger hard against the scanner, nor should you barely touch the scanner. Instead, apply a constant, even, light pressure to the finger scanner with the pad of your fingertip. Don't move your finger or roll your finger on the scanner.



Correct finger placement on a finger scanner – side view



Correct finger placement on a finger scanner – top view

